

Brighton Crescent

BEDMINSTER

APPROXIMATE FLOOR AREA
130 SQM / 1399 SQFT



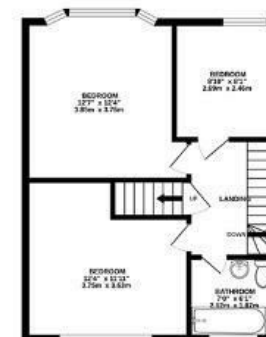
BASEMENT



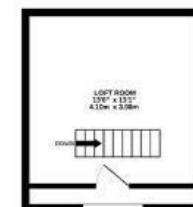
GROUND FLOOR



FIRST FLOOR



SECOND FLOOR



Illustrations are for reference purposes only, measurements are approximate, not to scale.

Boardwalk

Brighton

BEDMINSTER, BRISTOL

£

£450,000



BS3 3PP

zzz

3 Bedrooms



2 Bathrooms

"We have loved living here, raising our four children who have now moved on with their own lives. It has been an amazing family home, full of memories – from large Christmas get-togethers to summer parties in the garden. We've also benefited from the fantastic transport links, with the airport and train station just a two-minute walk away, making both business trips and holidays incredibly easy."

